

# LBAN™ Location Based Alerts & Notifications

## Geofencing for Mobile Devices

- ✓ Manage mobile applications and device functions in geofenced locations /spaces
- ✓ Notifies device users prior to entry, at entry, and upon exit
- ✓ Integrated solution with MobileIron Unified Endpoint Management (UEM)
- ✓ Supports Android and iOS
- ✓ Affordable and Easy to use

The work you do is too important to allow phones and tablets to have unrestricted access to your network.

Every cell phone and tablet that comes through your doors is a potential security threat. LBAN gives you control of the devices.

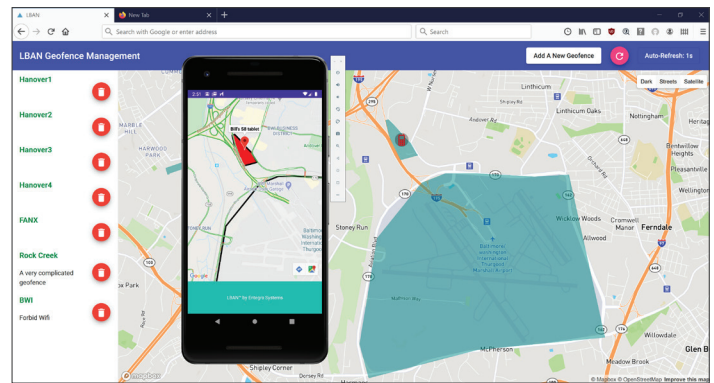
Your office, school, hospital, or retail store is ground zero for potential hacks, theft, and intrusions. Or maybe it's a space where certain phone or tablet use is simply inappropriate. LBAN with MobileIron UEM allows you to enable or limit usage of mobile device functions and applications within your defined workspace(s) (geofenced area). This location-based, mobile-device access, control/monitor technology and user notifications help you and mobile device users to effectively work together.

### LBAN benefits:

- Manages access to Bluetooth, camera, microphone, WiFi, and/or cellular antenna
- Activates automatically when devices enters the geofence (virtual workspace) and restores normal operation when devices leave the geofence
- Lets you easily create, modify, and delete geofences through an intuitive map display
- Offers layered (embedded) geofence capability with varying security levels
- Enables geofence policy creation via easy point and click
- Provides event and audit logging

### How LBAN works:

Entegra's LBAN provides easy geofence creation, mobile device notification, and management. It implements custom policies based on a set of administrator-defined criteria that automatically notify the device user prior to entry and activate/deactivate upon entry/exit of a specified geofenced location or area. This allows use of a mobile device in controlled access areas with predefined limitations or enhancements, such as limiting access to the device's Bluetooth, camera, microphone, WiFi, and/or cellular antenna, while within a set area.



An administrator, via a web-based management console, creates the custom policy along with a custom-defined geographic polygon, a geographic point and radius, or beacons. A user's mobile device is then enrolled in the system. Once enrolled, the user's device will automatically download a geofence policy, defining device functionality while inside the geofence, and will automatically return to normal function upon leaving the geofence.

For more information, contact:  
[LBAN@entegrasystems.com](mailto:LBAN@entegrasystems.com)



This product is covered by  
 U.S. Patent No. 10270782 B1.

[WWW.ENTEGRASYSTEMS.COM](http://WWW.ENTEGRASYSTEMS.COM)